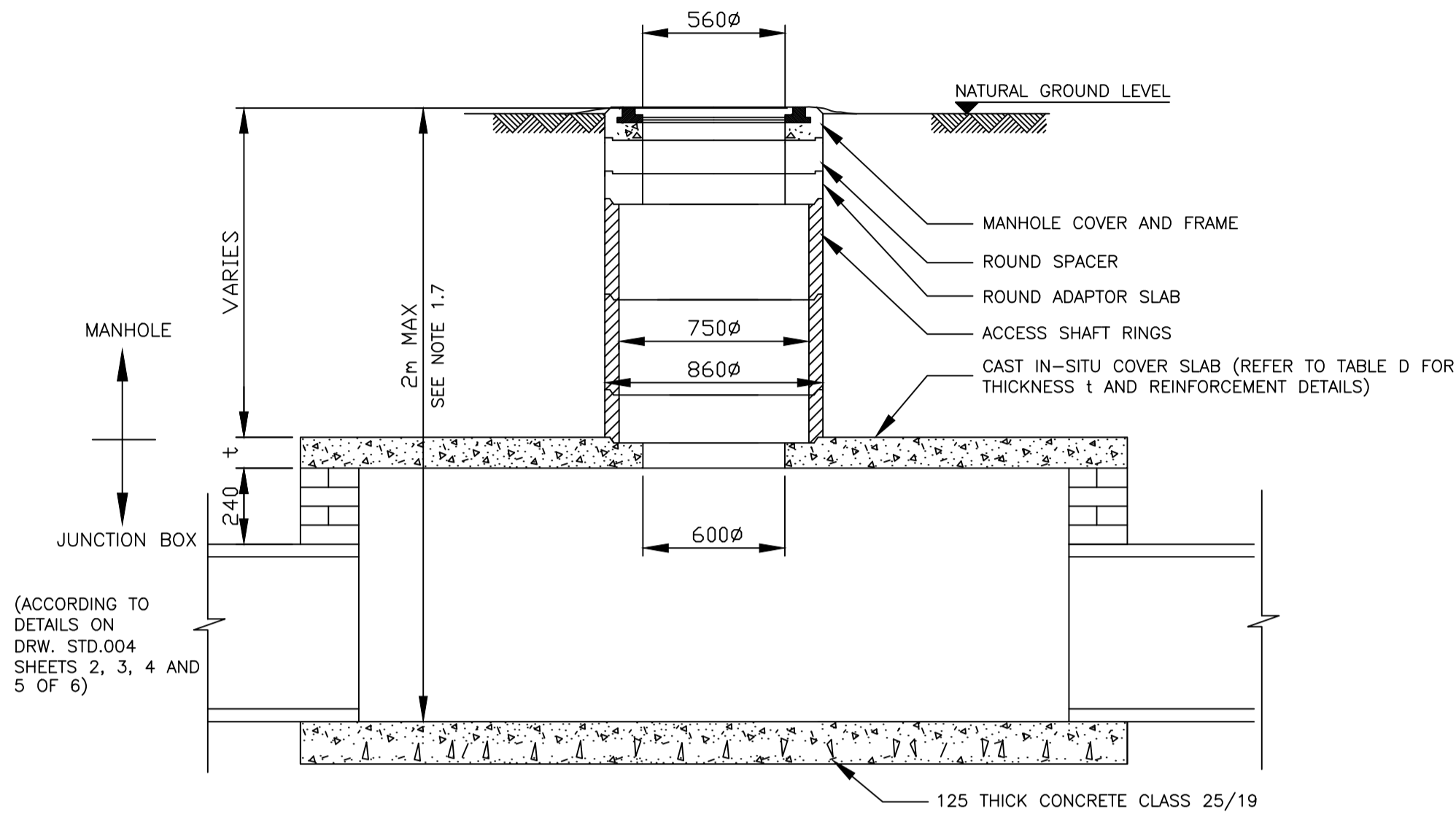
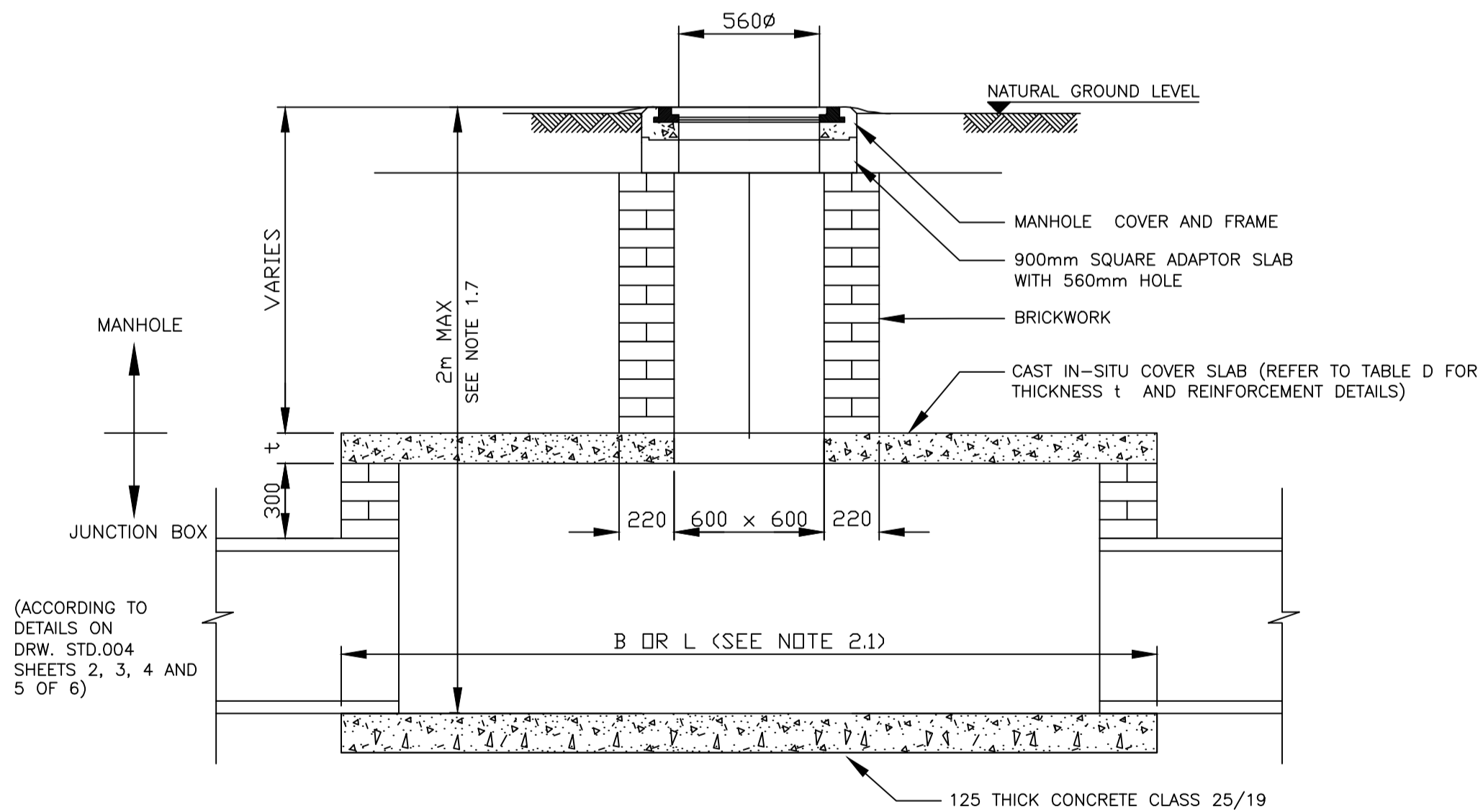


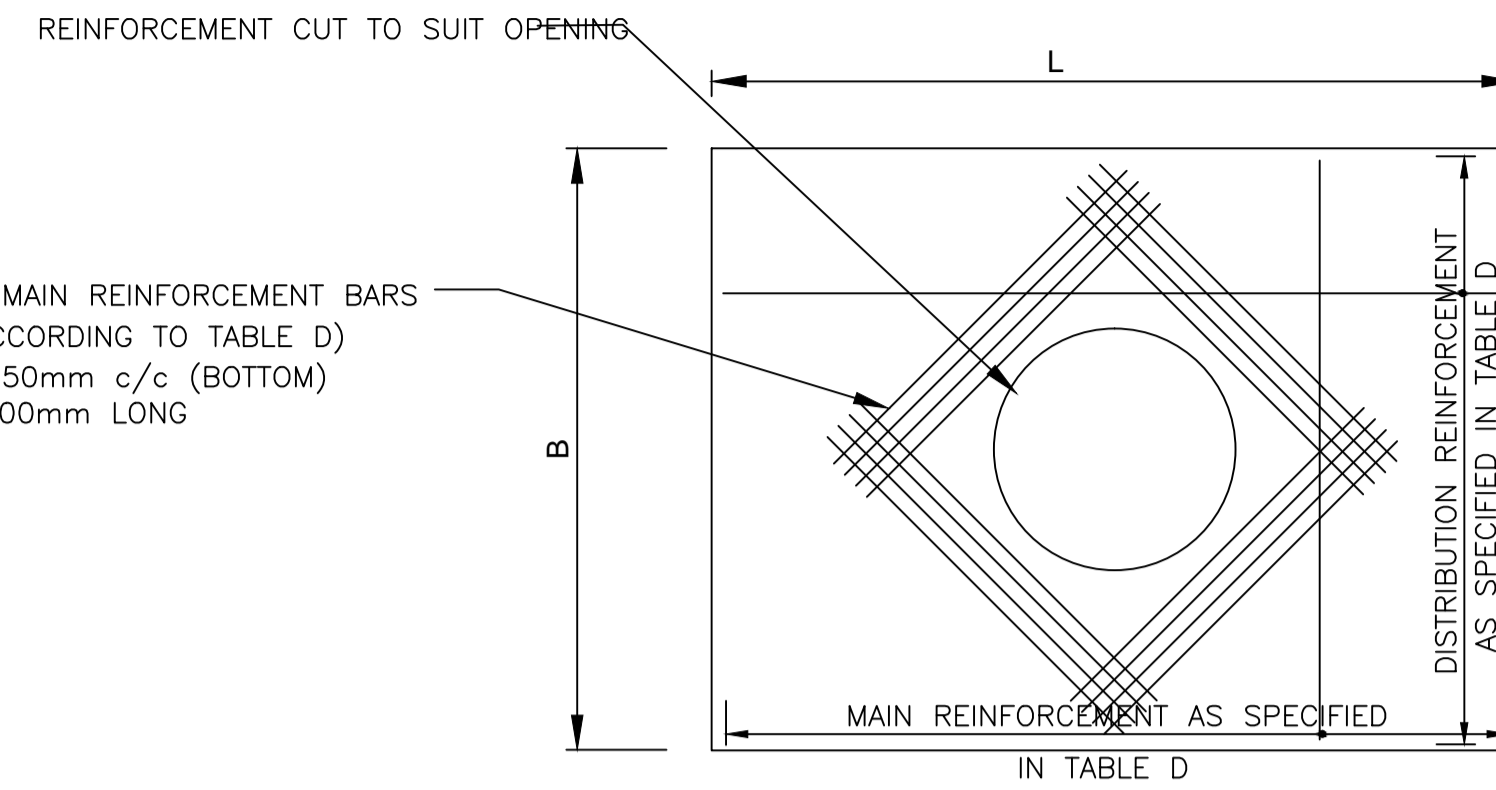
TYPICAL CROSS SECTION THROUGH JUNCTION BOX AND MANHOLE



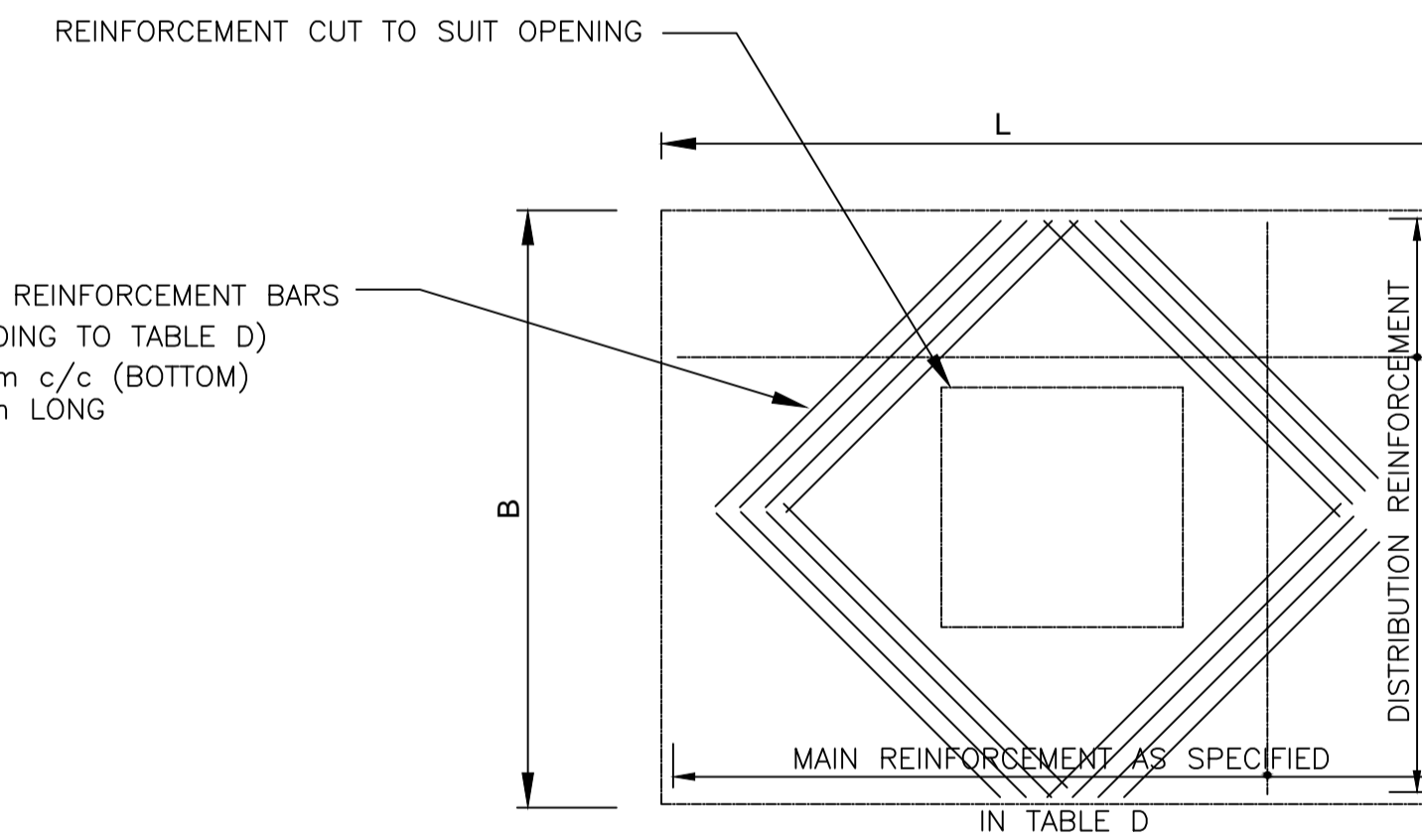
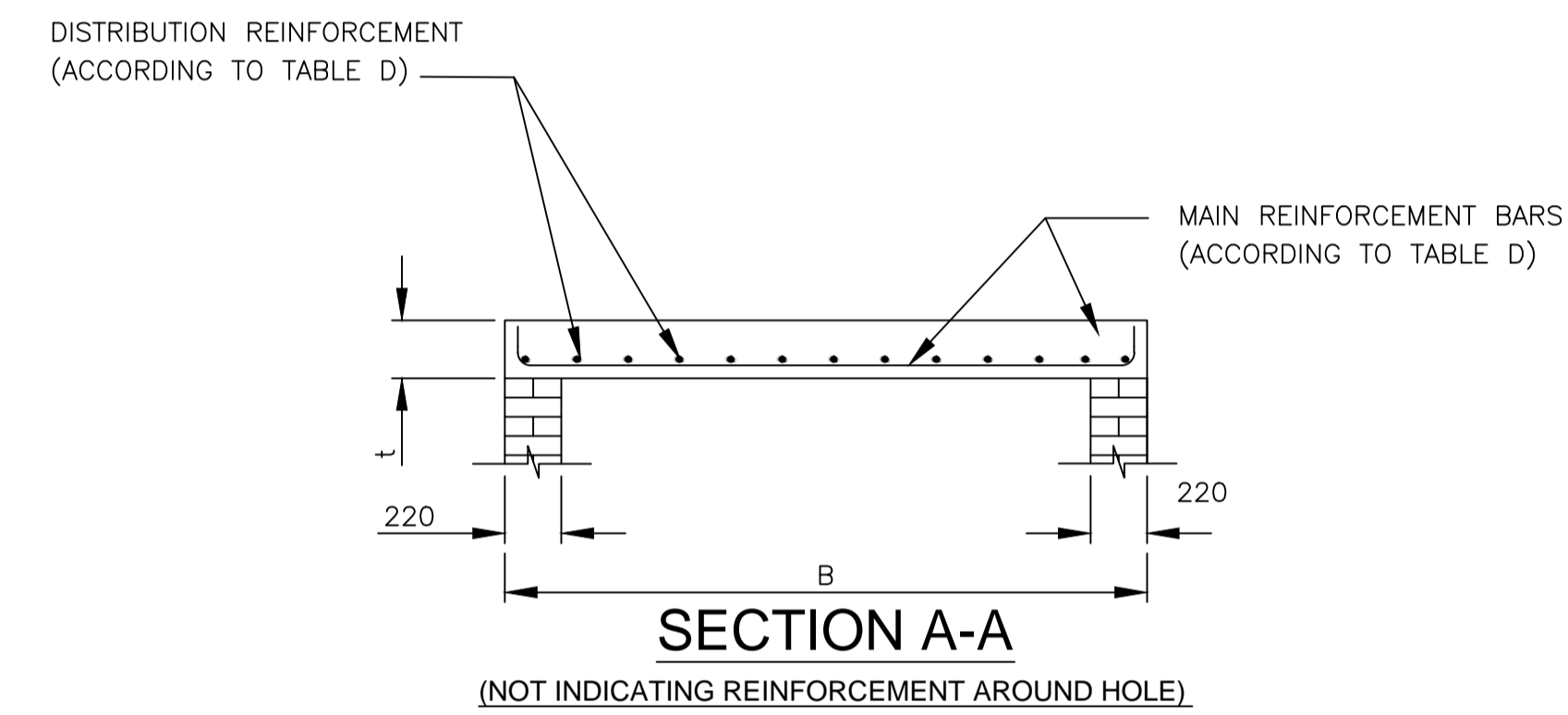
MANHOLE WITH PRECAST SHAFT



MANHOLE WITH MASONRY SHAFT



CAST INSITU COVER SLAB FOR CIRCULAR SHAFT SECTION



CAST INSITU COVER SLAB FOR SQUARE SHAFT SECTION

Span (B) (mm)	Thickness (t) (mm)	Main Reinforcement
Up to 1500	175	Y12 - 120
Up to 2500	200	Y16 - 150
Up to 3000	225	Y16 - 150
> 3000	Design to be submitted	

Distribution reinforcement: Y12 bars @ 200 c/c
Refer to notes for bending details.

NOTES AND SPECIFICATIONS

- MANHOLE**
 - All precast manhole sections shall comply with the relevant requirements of SANS 1294.
 - No step irons shall be required unless otherwise indicated on the drawings.
 - Dimensions of precast manhole sections are approximate and may vary slightly according to different manufacturer's specifications.
 - Position of manholes shall be directly above the PI of adjoining stormwater pipes.
 - The function of the combination precast concrete/cast iron manhole cover is to replace lost cast iron covers, unless otherwise specified.
 - All concrete manhole covers shall have the letters "SW" formed or engraved on top. Each letter shall be 50mm wide, 75mm high and 5mm thick.
 - Where the total depth of the junction box/manhole combination (invert level to finished ground level) exceeds 2.0m, a structural design must be submitted by a professional engineer.
 - All bricks shall comply with SANS 227 and shall be engineering units of class FBS (Face brick Standard) with a nominal compressive strength of 12 MPa.
- CAST IN-SITU COVER SLABS**
 - Measurement B is always smaller than L.
 - Concrete to be class 25/19.
 - Concrete to be cured for a minimum period of 7 days.
 - Minimum cover to reinforcement is 20mm.
 - Type, bar and spacing of reinforcement as specified in Table D.
 - Main reinforcement to be shape code 38, with hook length (A- dimension) not less than t minus 60, except for slabs with a span not exceeding 1000, where no hooks are required and shape code 20 is used.

NR.	DATE	APPROVED	DESCRIPTION	PAR.

DESIGNED: J. CRONJE	DRAWN: S. AUDIE
DESIGN CHECKED BY: S. NAIDOO	INFRASTRUCTURE TECHNICAL INFORMATION MANAGEMENT D.J. CHALMERS

CITY OF TSHWANE
ROADS AND TRANSPORT DEPARTMENT

GROUP HEAD
Mr. Letloakane P. (Pheko)

P.O. BOX 1409
PRETORIA
0001

DIVISIONAL HEAD
Mr. Marven K. Thagale

P.O. BOX 1409
PRETORIA
0001

TRANSPORT INFRASTRUCTURE DESIGN AND CONSTRUCTION DIVISIONAL HEAD Mr. K. Thagale (Marven)	TRANSPORTATION PLANNING DIVISIONAL HEAD Mr. L. Swaneepoel (Marven)
SIGNATURE: _____	SIGNATURE: _____
DATE: _____	DATE: _____

DRAWING APPROVED BY GROUP HEAD
Mr. Letloakane P. (Pheko)

SIGNATURE: _____ DATE: _____

LOCATION OF PROJECT:
TYPICAL STANDARD DETAILS

DESCRIPTION OF PROJECT:
JUNCTION BOX AND MANHOLE DETAILS

CONTRACT No.: _____ PROJECT No.: _____

DATE: FEBRUARY 2017 SCALE: AS SHOWN ORIGINAL PAPER SIZE: A1

DRAWING NO: **STD004** SHEET NO: 6 of 7 REVISION

