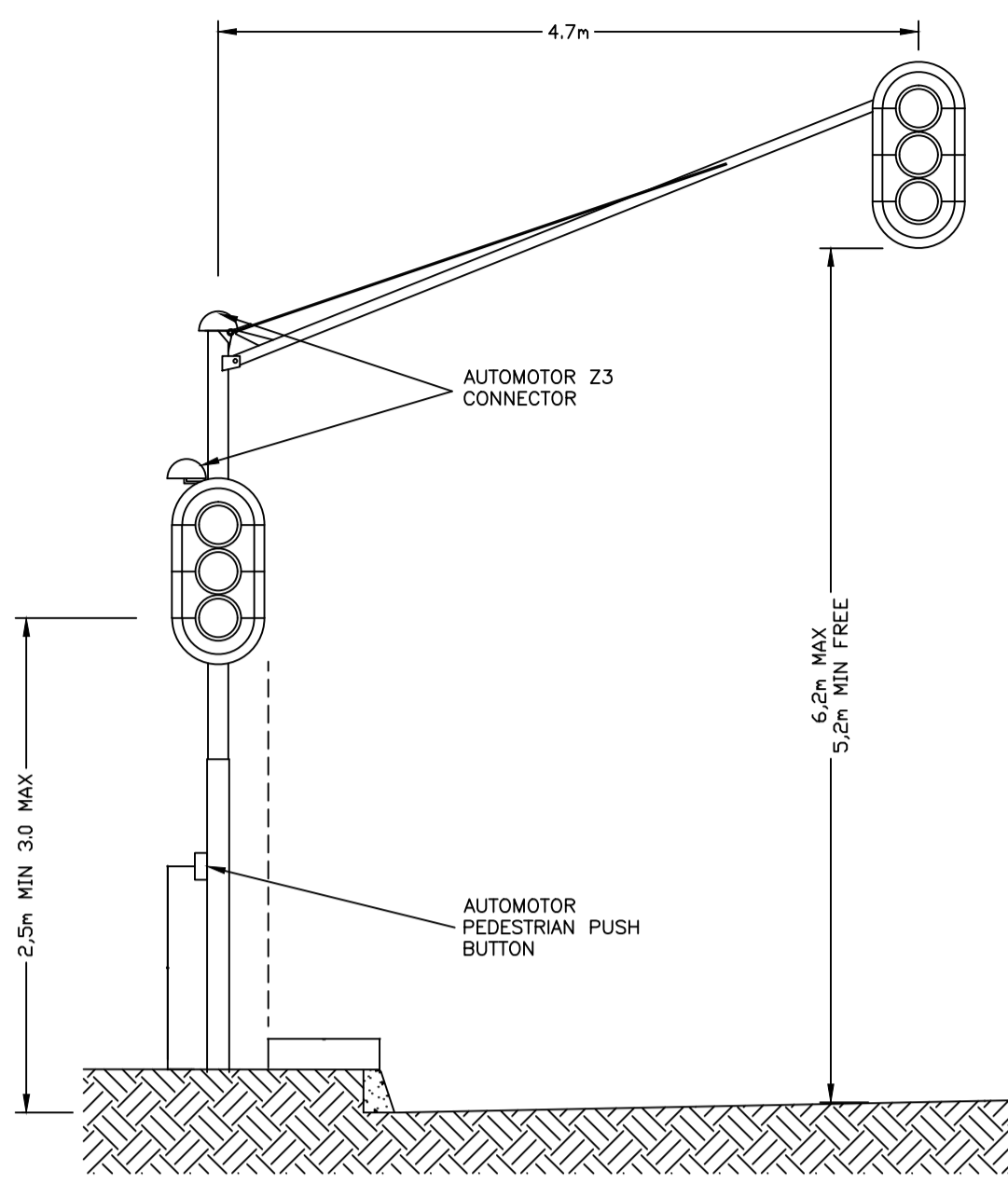


NOTES AND SPECIFICATIONS

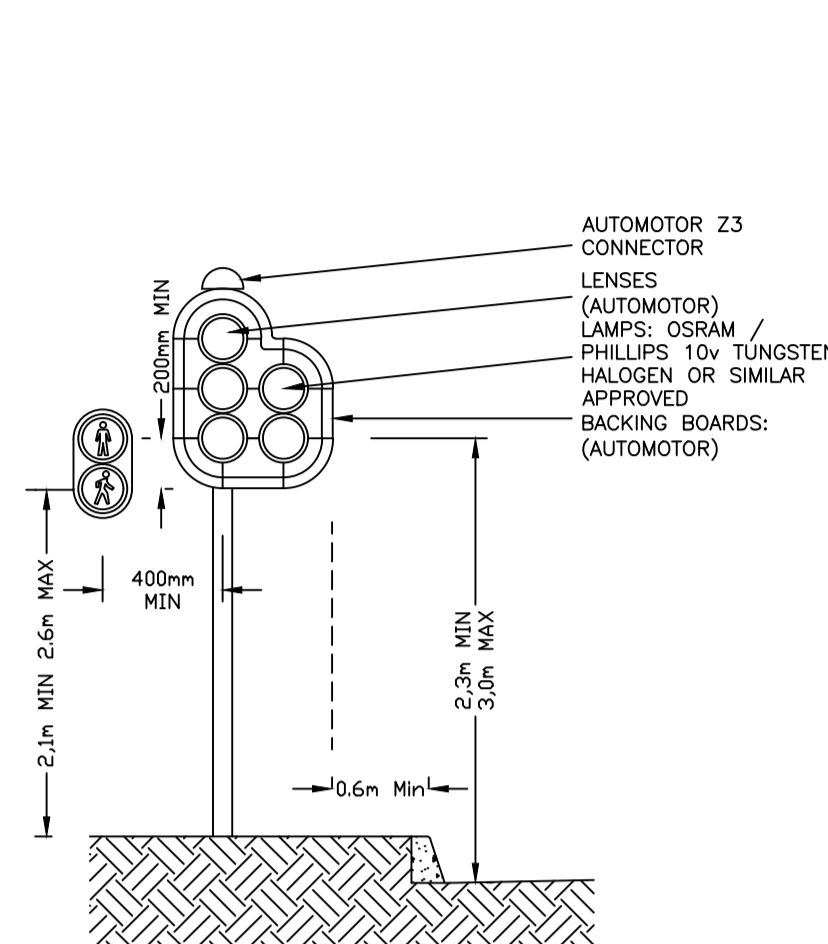
- ALL POLES TO BE EARTHED TO CABLE ARMOURING
- EARTH SPIKE (1.0m MIN) NEXT TO CONTROLLER FOR EARTHING OF CONTROLLER.

INCLUDING SINAGE AS FOLLOWS COMBINE HEAD WITH SIGN.

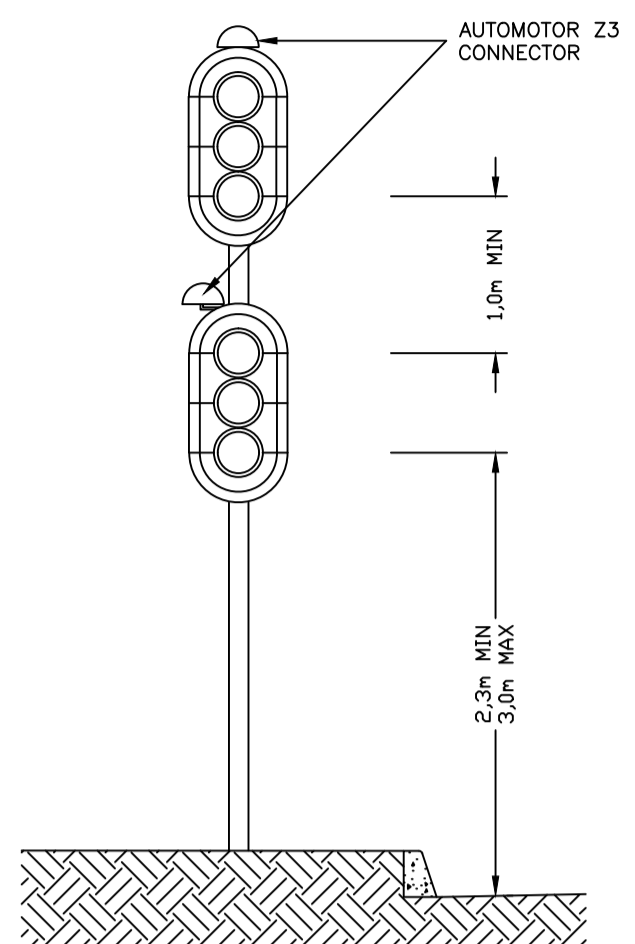
- S4 + ST1
- S1R + ST2
- S1L + ST3
- S5 + ST5
- S7 + ST4



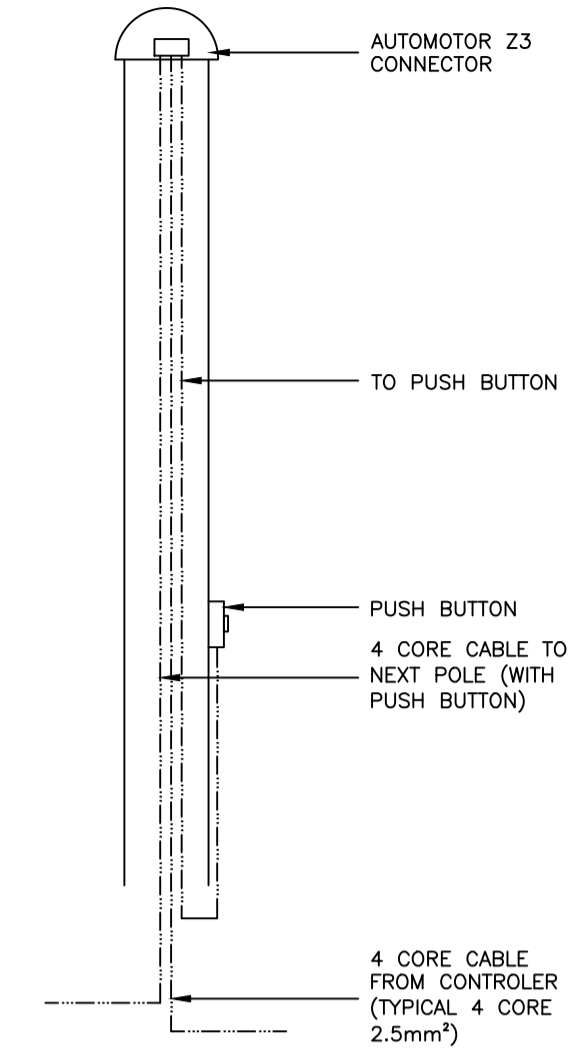
DETAIL 2A: CANTILEVER POLE: HEIGHT OF TRAFFIC SIGNAL HEADS
NOT TO SCALE



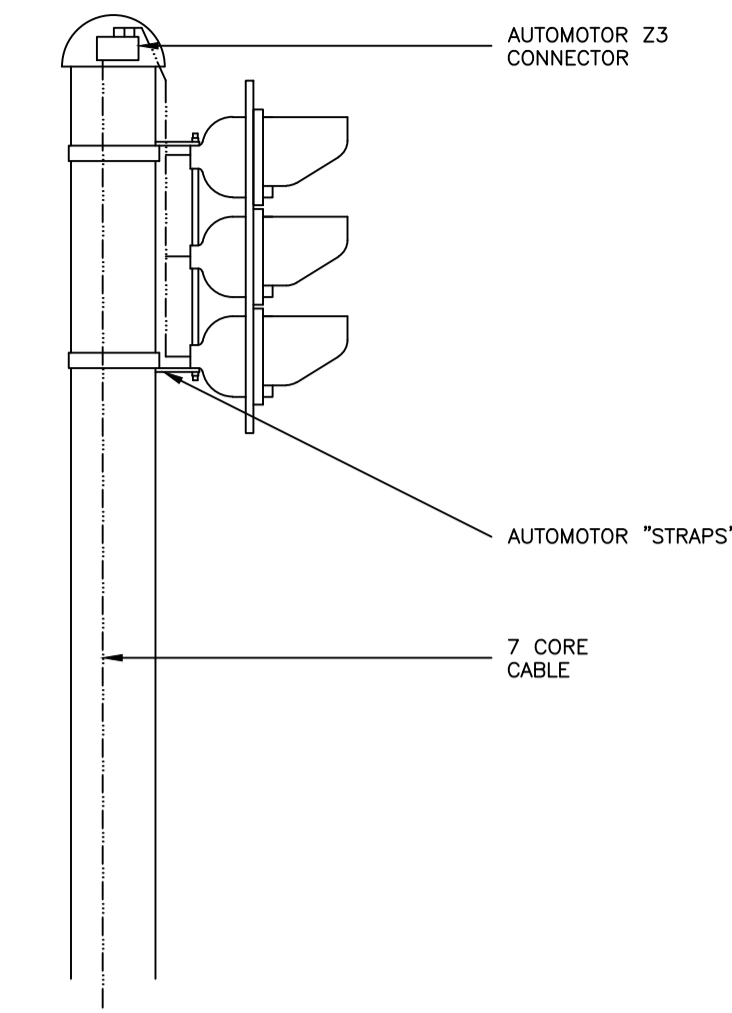
DETAIL 2B: STANDARD POLE: HEIGHT OF TRAFFIC SIGNAL HEADS
NOT TO SCALE



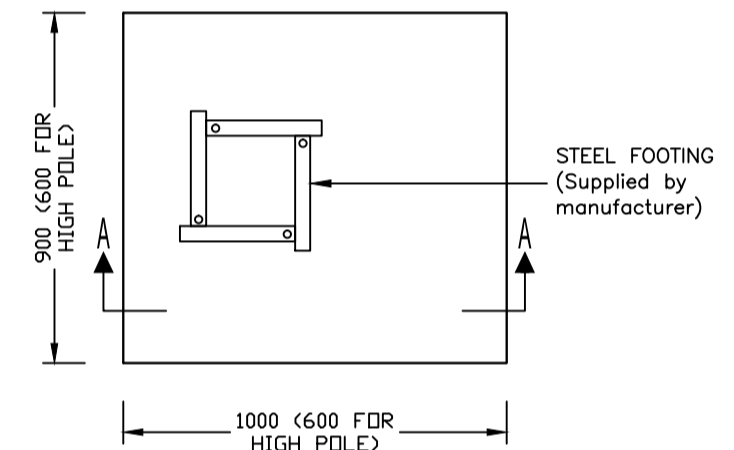
DETAIL 2C: TOTEM POLE: HEIGHT OF TRAFFIC SIGNAL HEADS
NOT TO SCALE



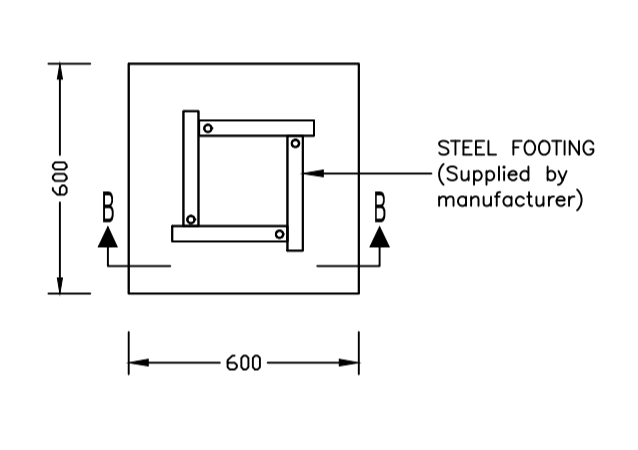
DETAIL 2D: WIRING FOR PEDESTRIAN PUSH BUTTON
NOT TO SCALE



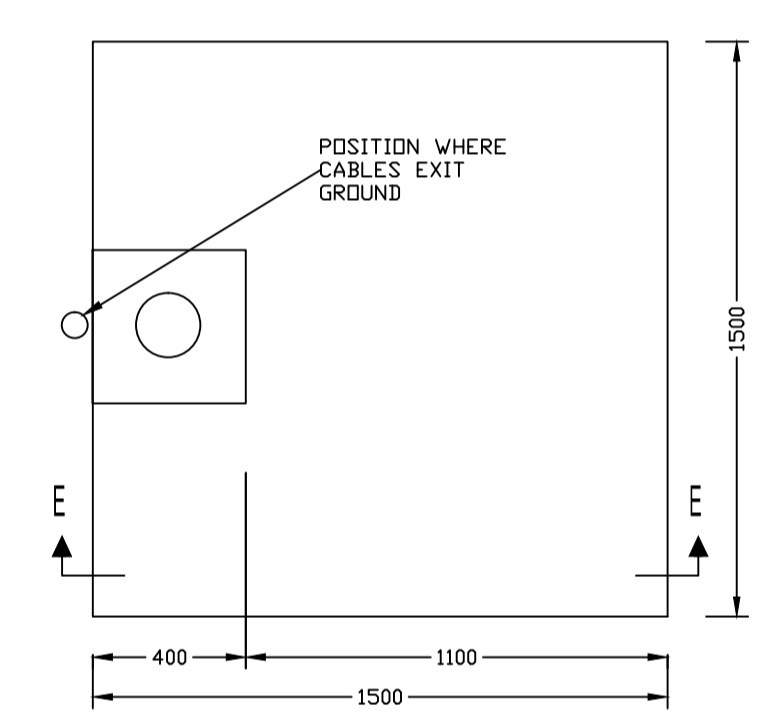
DETAIL 2E: TYPICAL CABLE CONNECTIONS AND FIXING OF SIGNAL HEADS
NOT TO SCALE



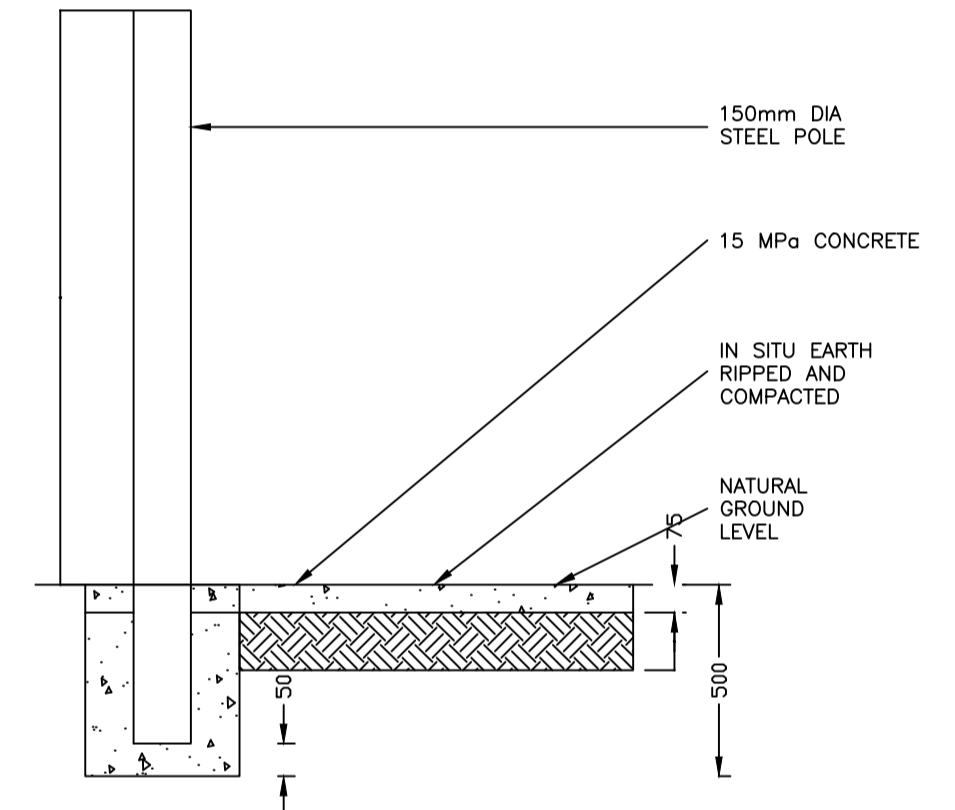
DETAIL 2F: PLAN FOR FOOTING TOTEM/CANTILEVER POLE
SCALE 1: 20



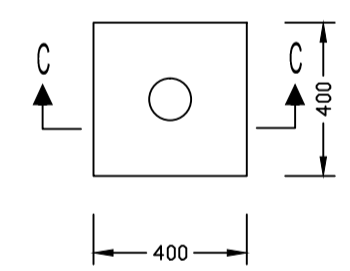
DETAIL 2G: PLAN FOR FOOTING OF STANDARD POLE
SCALE 1: 20



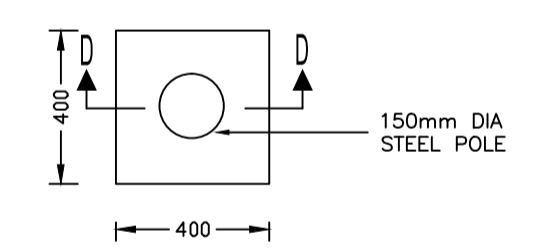
DETAIL 2J: PLAN FOR FOOTING OF CONTROLLER BOX
SCALE 1: 20



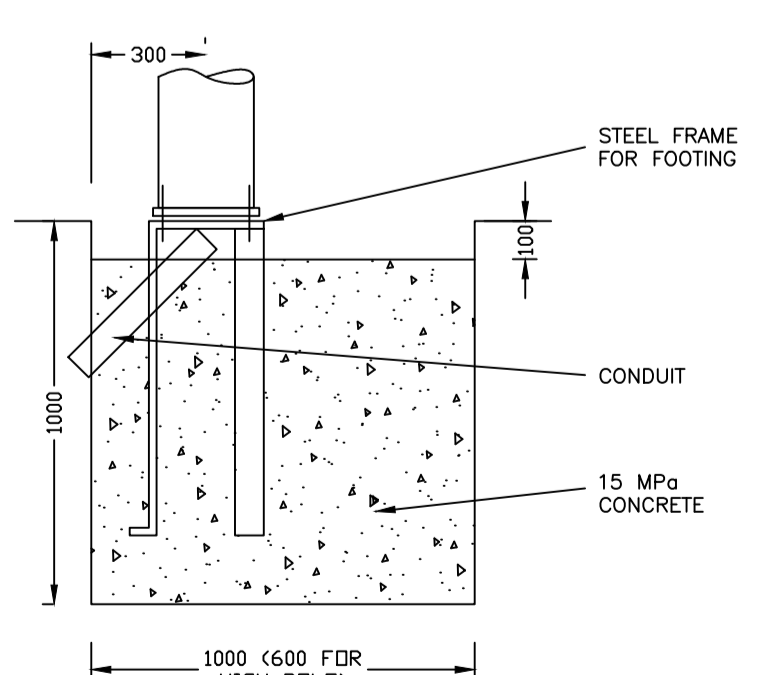
SECTION E-E
DETAIL 2O: FOOTING FOR CONTROLLER BOX.
SCALE 1: 20



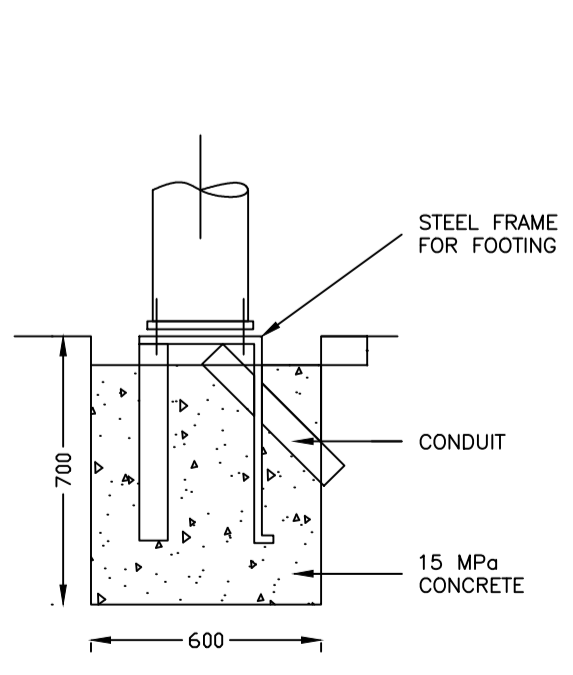
DETAIL 2H: PLAN FOR FOOTING OF STANDARD POLE
SCALE 1: 20



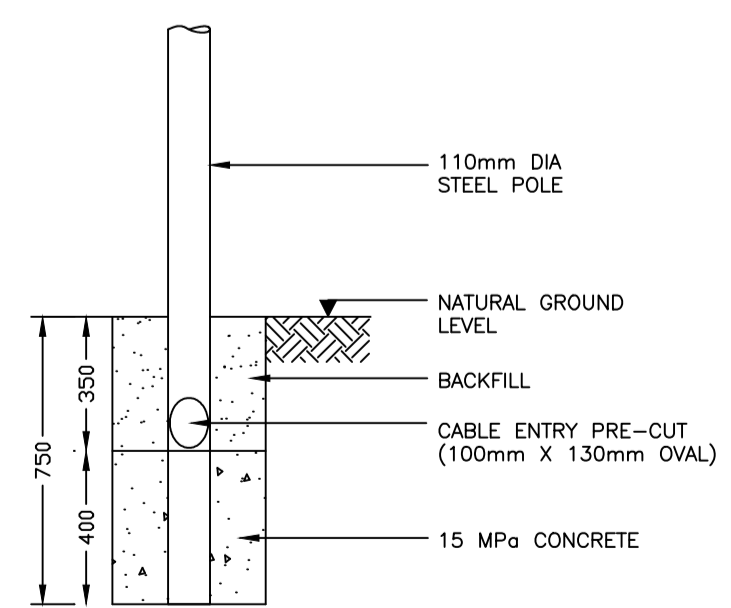
DETAIL 2I: PLAN FOR FOOTING OF CONTROLLER BOX
SCALE 1: 20



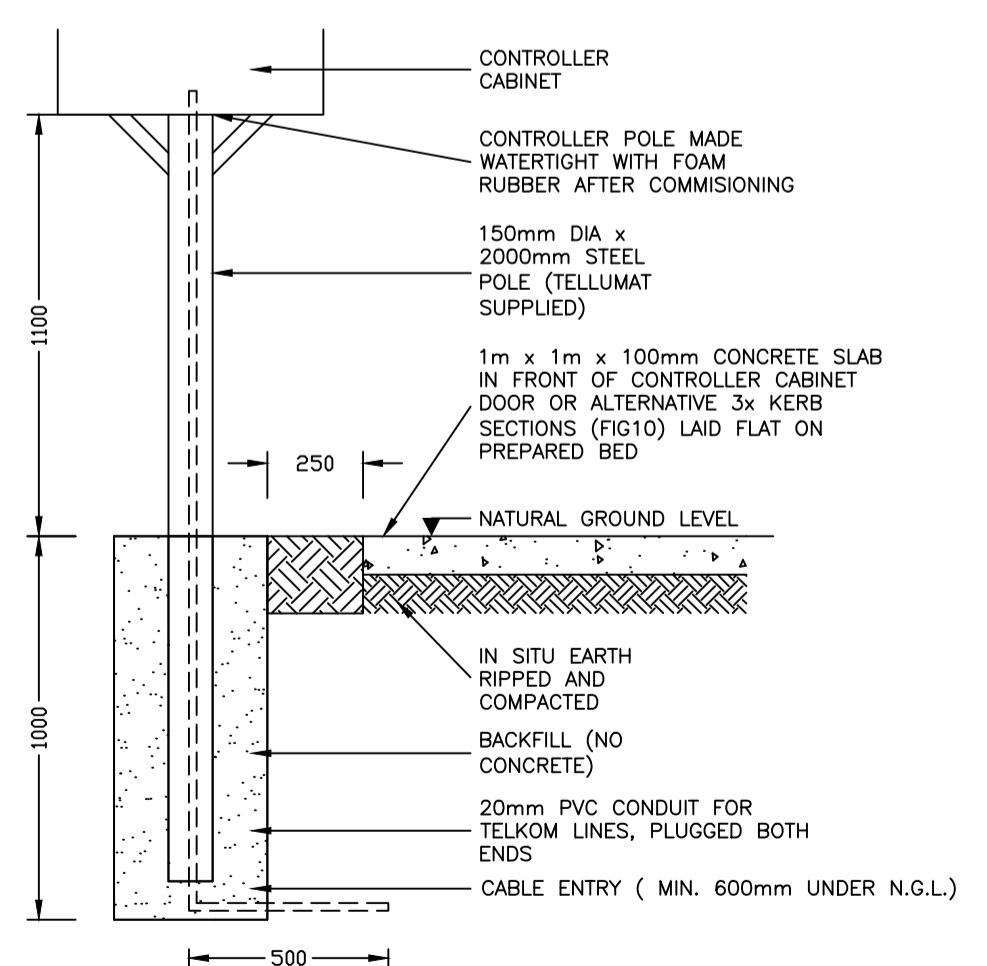
SECTION A-A
DETAIL 2K: FOOTING FOR TOTEM / CANTILEVER POLE
SCALE 1: 20



SECTION B-B
DETAIL 2L: FOOTING FOR STANDARD POLE.
SCALE 1: 20



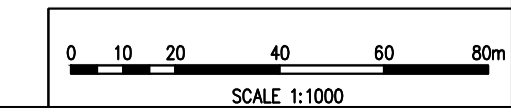
SECTION C-C
DETAIL 2M: FOOTING FOR STANDARD POLE
SCALE 1: 20



SECTION D-D
DETAIL 2N: FOOTING FOR CONTROLLER BOX
SCALE 1: 20

SIGNAL FACE TYPE	DESCRIPTION	SYMBOL
S1		
S1L		
S2		
S3		
S4		
S5		
S6		
S7		
S10R		
S10L		
S11		
S12		
S13		
S14		
S15		
S16	PEDESTRIAN SIGNAL WITH PUSH BUTTON	
S17		

TABLE 2A: SIGNAL FACE TYPES:



AMENDMENTS				
NR.	DATE	APPROVED	DESCRIPTION	PAR.

DESIGNED H. STRACHAN	DRAWN S. AUDIE
DESIGN CHECKED BY P.A. ODENDWAAL P.Eng.	INFRASTRUCTURE TECHNICAL INFORMATION MANAGEMENT D.J. CHALMERS
SIGNATURE: _____ DATE: _____	SIGNATURE: _____ DATE: _____

CITY OF TSHWANE
ROADS AND TRANSPORT DEPARTMENT

GROUP HEAD
Mr. Letsohane P. (Pheko)
P.O. BOX 1409
PRETORIA
0001

ACTING DIVISIONAL HEAD
Mr. Lebepe M.T. (Thabo)
P.O. BOX 1409
PRETORIA
0001

DRAWING APPROVED BY ACTING EXECUTIVE DIRECTOR
Mr. Lebepe M.T. (Thabo)

SIGNATURE: _____ DATE: _____

LOCATION OF PROJECT:
TYPICAL STANDARD DETAILS

DESCRIPTION OF PROJECT:
TRAFFIC SIGNALS
POLES AND SIGNAL HEADS

CONTRACT No.:	PROJECT No.:
DATE: FEBRUARY 2017	SCALE: AS SHOWN
DRAWING NO. STD019	SHEET NO. 2 OF 4
ORIGINAL PAPER SIZE: A1	REVISION: