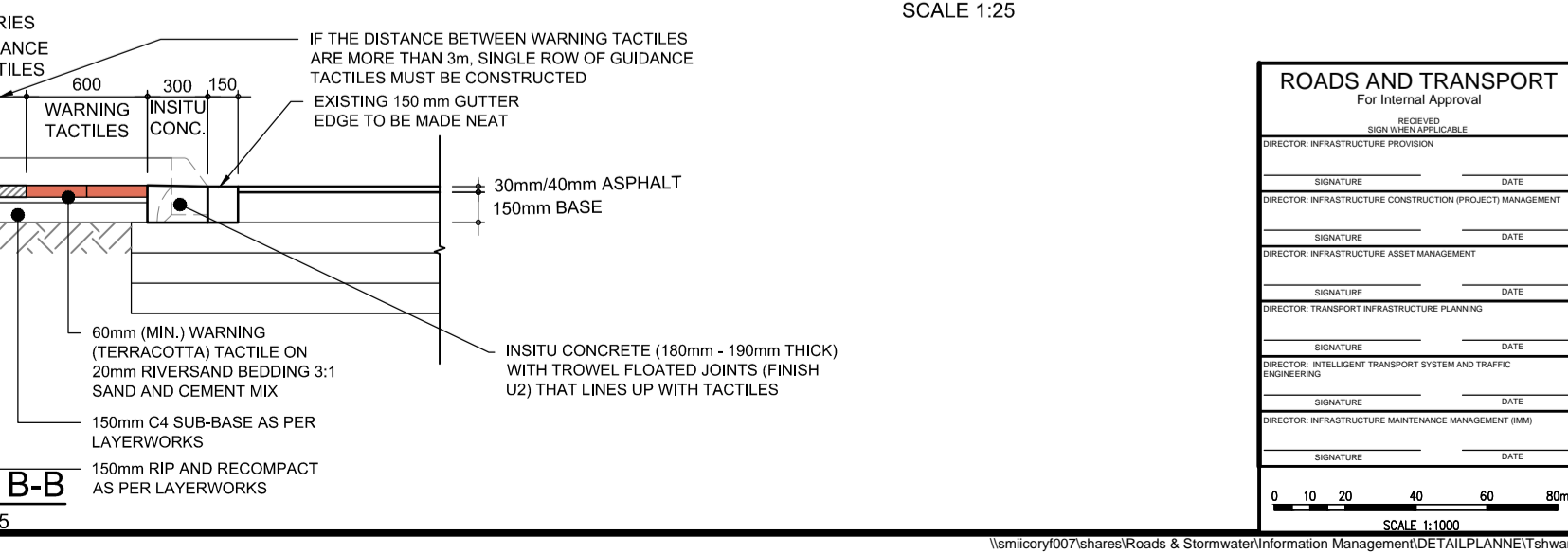
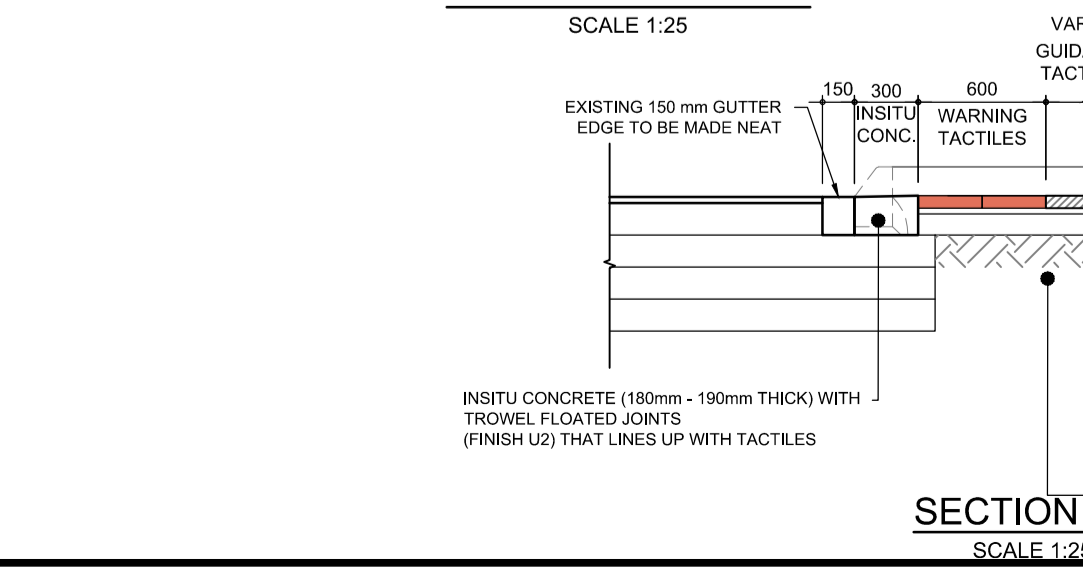
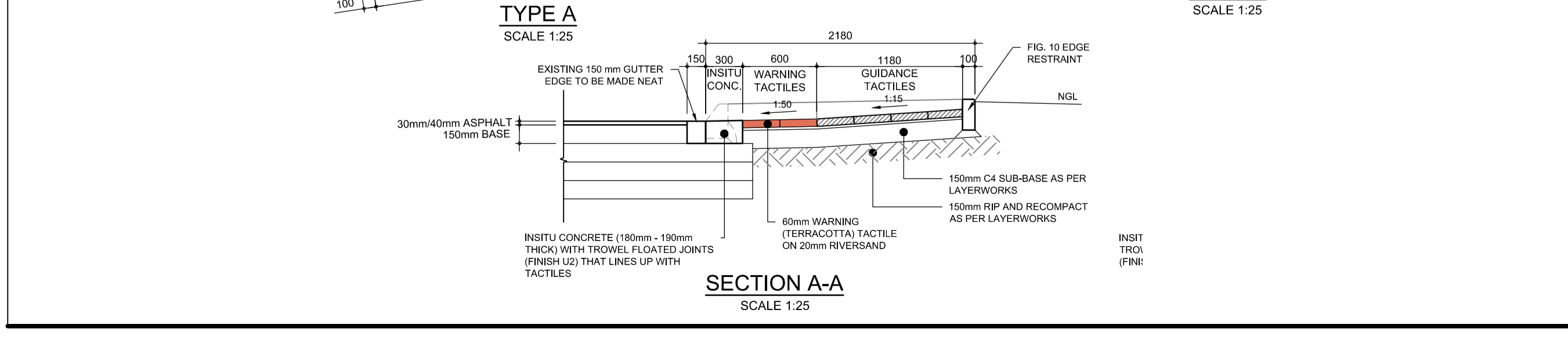
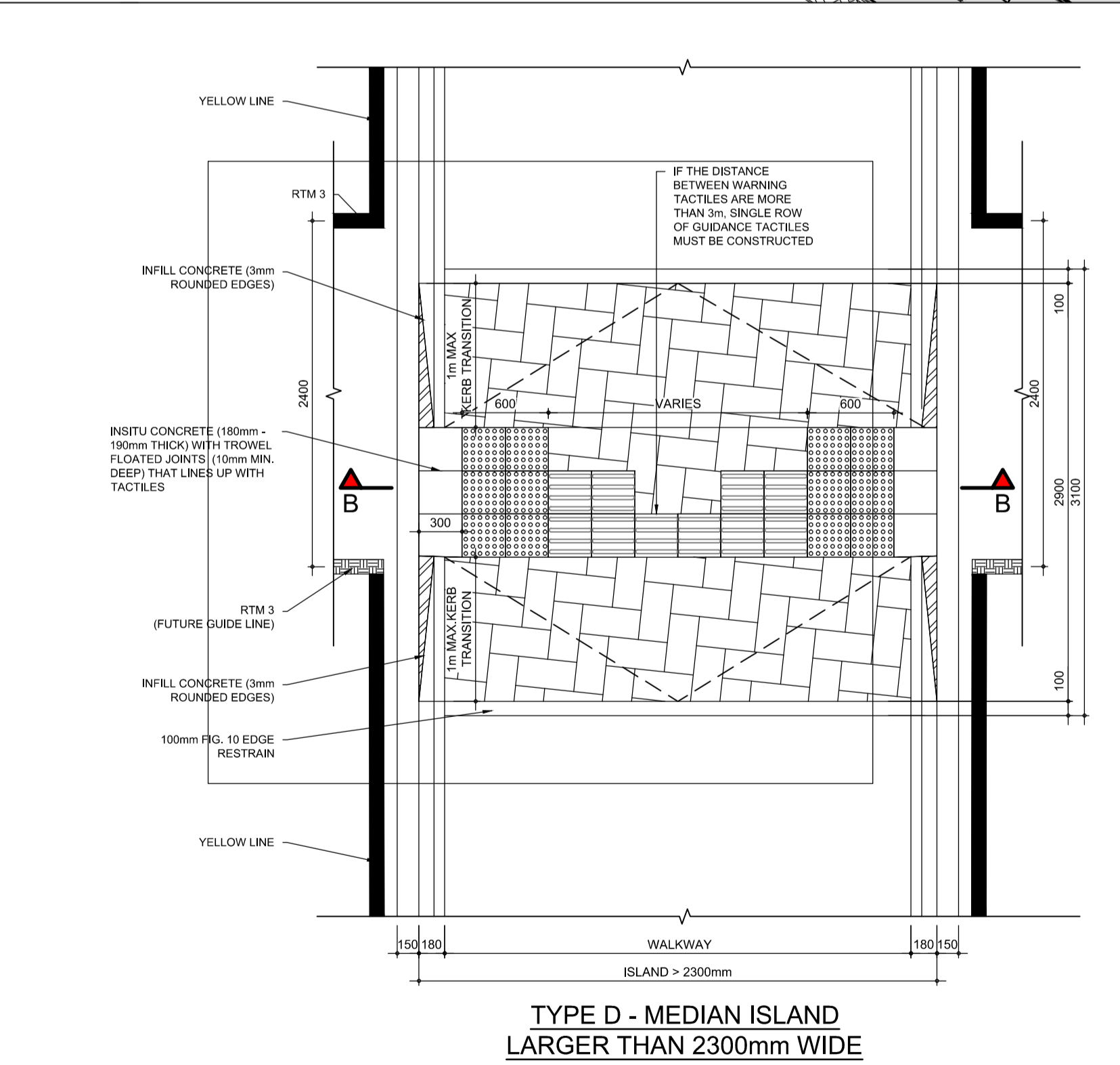
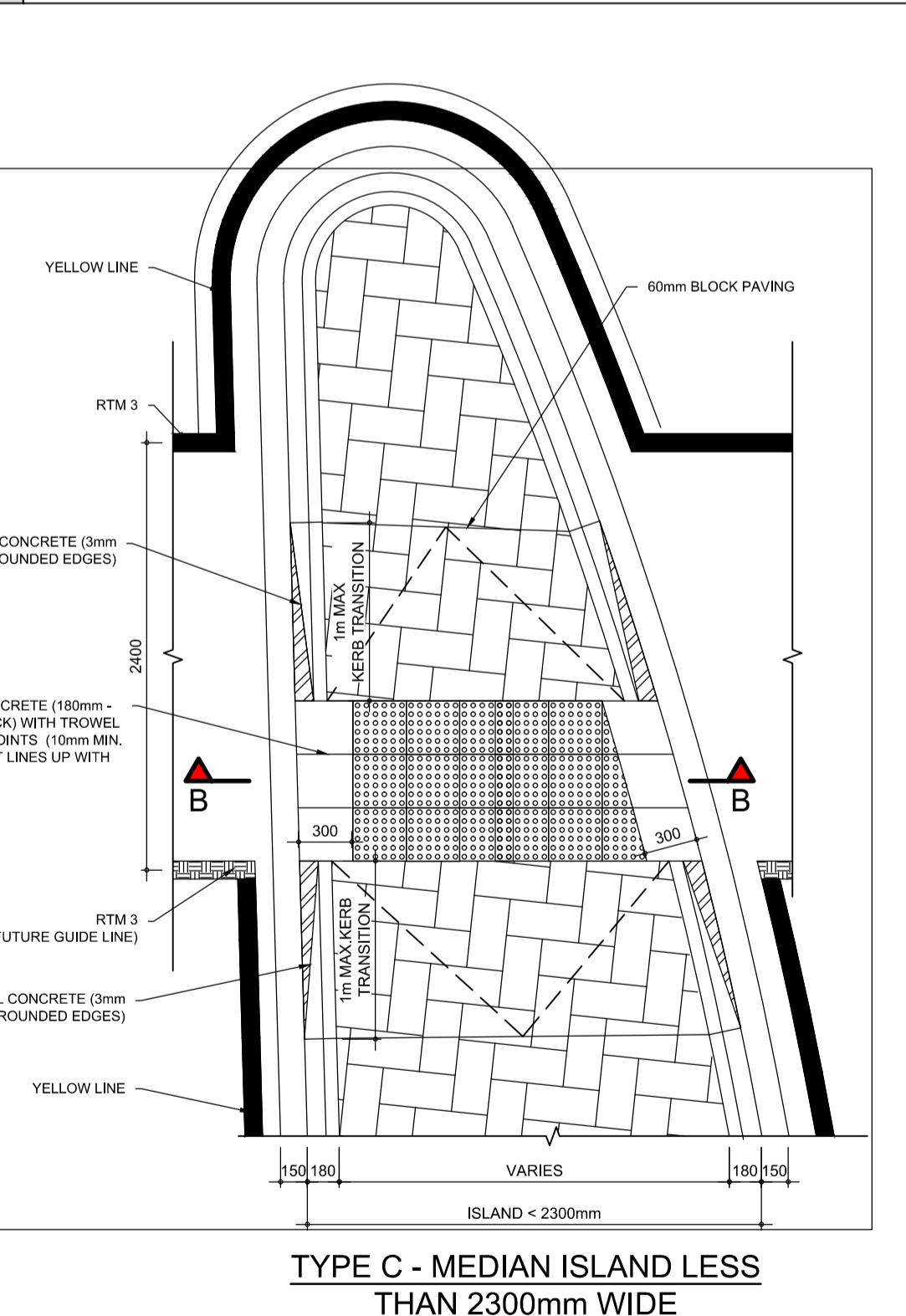
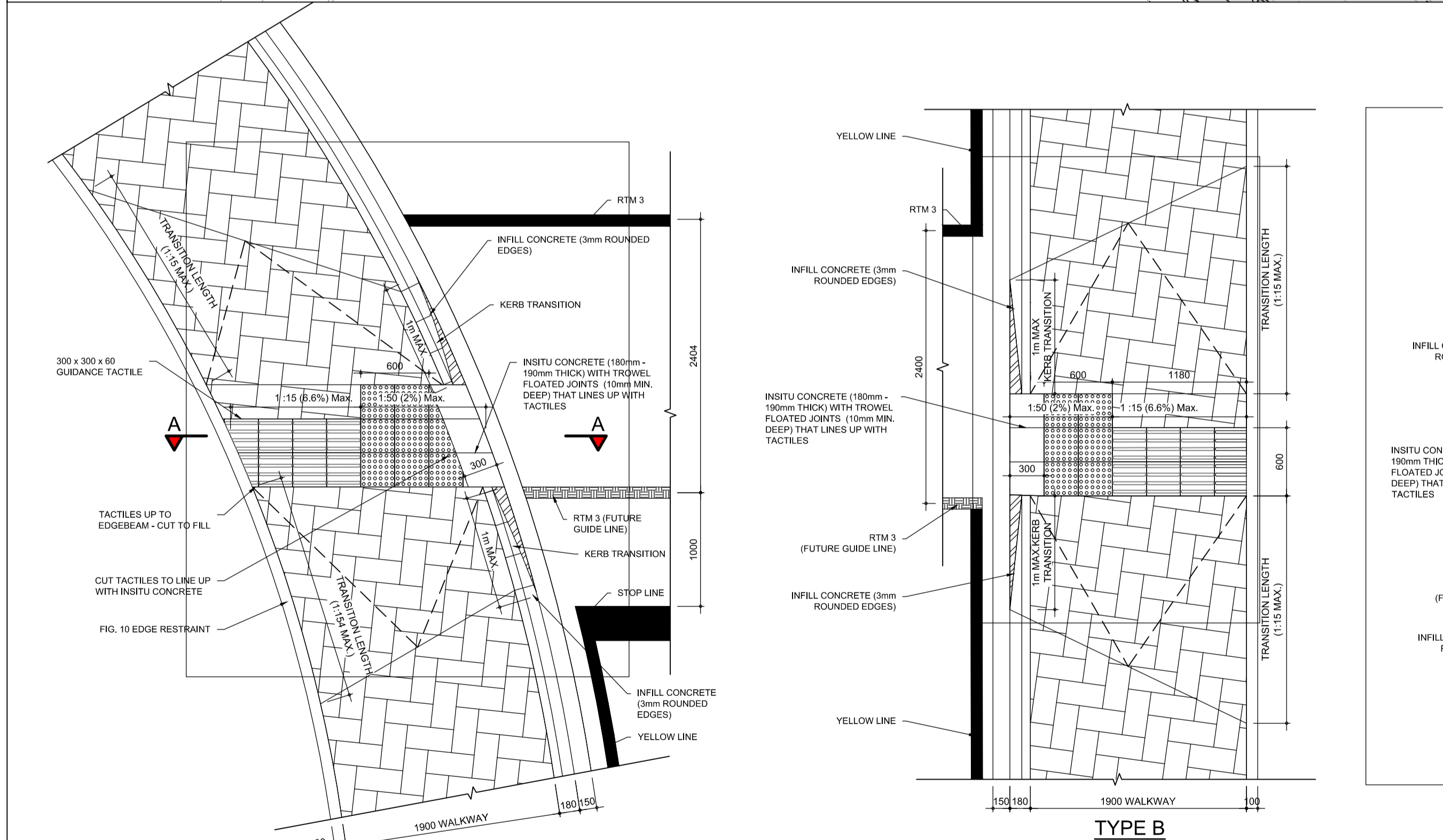


- NOTES AND SPECIFICATIONS**
- NOTES:**
- ALL CONSTRUCTION TO BE DONE IN ACCORDANCE WITH THE STANDARD SPECIFICATIONS FOR MUNICIPAL CIVIL ENGINEERING WORKS, THIRD EDITION 2005 AND THE STANDARD CTM DETAIL DRAWINGS.
 - THIS DRAWING MUST BE READ IN CONJUNCTION WITH THE STANDARD SPECIFICATIONS FOR MUNICIPAL CIVIL ENGINEERING WORKS, SERIES 4.
 - THIS DRAWING MUST BE READ IN CONJUNCTION WITH THE CTM STANDARD DRAWING FOR PEDESTRIAN RAMPS - STD009
 - ALL CONCRETE INDICATED TO BE CLASS 25/19.
 - SURFACE FINISH TO BE CLASS U2 & F2.
 - ALL CONCRETE EDGES TO BE ROUNDED - 3mm. THIS INCLUDES JOINTS BETWEEN OLD AND NEW CONCRETE.
 - KERB TRANSITIONS:
 - 1m TRANSITION FOR RADII EXCEEDING 15m (1 x 1m KERBS)
 - 0.9m TRANSITION FOR RADII EQUAL AND SMALLER THAN 15m (3 x 300mm KERBS)
 - TACTILE COLOURS:
 - 8.1 WARNING TACTILES - TERRACOTTA
 - 8.2 GUIDANCE TACTILES - GREY
 - THE SETTING OUT OF THE PEDESTRIAN LINES AND RAMPS MUST TAKE PLACE WITH THE ENGINEER PRESENT.
 - AFTER PEDESTRIAN LINES HAVE BEEN DETERMINED THE TACTILES MUST BE POSITIONED ON SITE AND MUST BE APPROVED BY THE ENGINEER, PRIOR TO THE CONSTRUCTION OF THE RAMPS.
 - THIS IS A GUIDELINE INDICATING THE MINIMUM SPECIFICATIONS. SUBMIT DETAIL DESIGN FOR APPROVAL TO THE TSHWANE TRAFFIC SYSTEM ENGINEERS.



AMENDMENTS			
NO.	DATE	APPROVED	DESCRIPTION

DESIGNED FOR: W. BRUJINS
 DRAWN: S. AUDIE
 DESIGN CHECKED BY: MS. CR. RAMEKANE
 INFRASTRUCTURE TECHNICAL INFORMATION MANAGER: D.J. CHALMERS

CITY OF TSHWANE
 ROADS AND TRANSPORT DEPARTMENT

GROUP HEAD: M. LEROUX P. (PHD)
 P.O. BOX 1000
 PRETORIA 0001

ACTING DIVISIONAL HEAD: M. LANGE M.T. (T) (B) (C)
 P.O. BOX 1000
 PRETORIA 0001

DRAWING APPROVED BY ACTING EXECUTIVE DIRECTOR: M. LANGE M.T. (T) (B) (C)

DATE:

LOCATION OF PROJECT:

TYPICAL STANDARD DETAILS

PEDESTRIAN RAMPS FOR THE DISABLED UNIVERSAL ACCESS

300 X 300 TACTILE BLOCK PAVERS

ROADS AND TRANSPORT
 For Internal Approval

DATE: 3 MARCH 2018
 SCALE: AS SHOWN
 ORIGINAL PAPER SIZE: A1

PROJECT NO.:

CONTRACT NO.:

DATE:

SCALE:

ORIGINAL PAPER SIZE:

STD009

SHEET NO: 2 OF 2